

Name: _____

Week of: _____

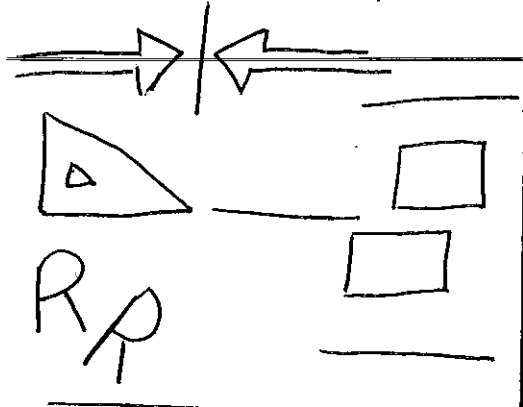
8th SPIRAL REVIEW

Solve.
 $-7.8x = -1.56$ $-2 = \frac{6}{7}p$
 $\frac{3}{2} = \frac{9}{10}k$ $3\uparrow d = 12\uparrow$
 $-1.5 + k = 8.2$ $w - 4 \div \frac{1}{2} = 5$

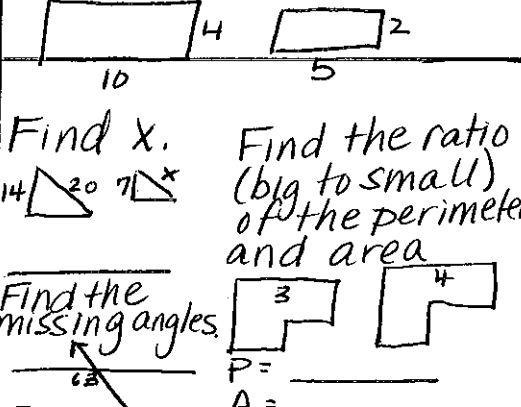
Solve.
 $2.3y + 4.4y - 3.7 = 16.4$
 $\frac{3}{4}z + \frac{1}{4}z - 6 = -5$
 $1.15(2p + 1.5) = 11.5$

Solve for y.
 $5y - x = 10$
 $4x - 4y = 1$
 $12 = 6x + 3y$

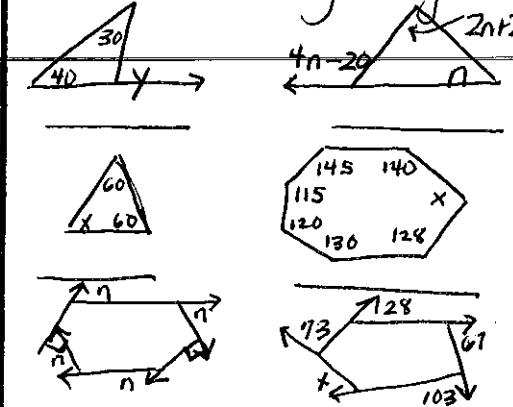
Name the transformation



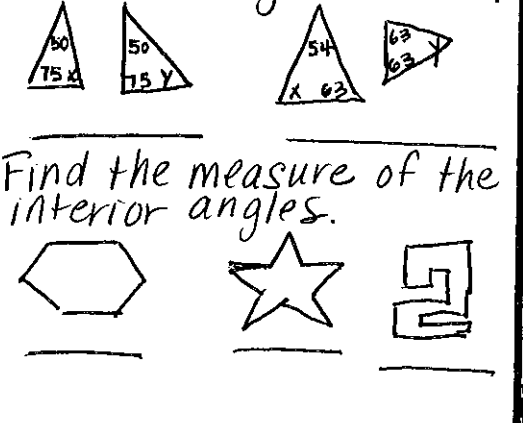
Are the shapes similar?



Find the missing angles.



Are the triangles similar?



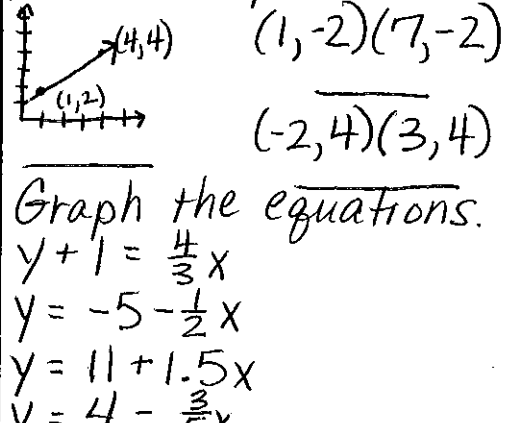
Use a function table to graph the equation.

$y = \frac{3}{4}x - \frac{1}{2}$

X	0	1	2	3
Y	-1	0	1	2

Find the slope.

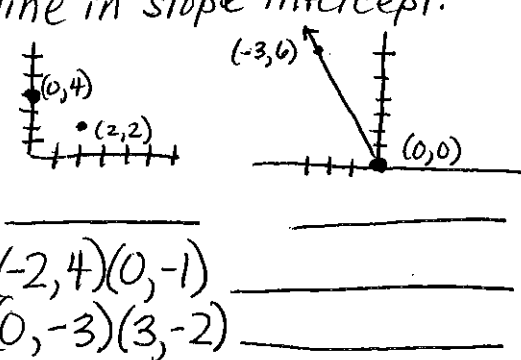
Find the slope.



Graph the equation using x and y intercepts.

$2x - 3y = 6$ $7x + 4y = 8$

Write an equation of the line in slope intercept.



Write an equation of the line in point-slope form.

$(3, 0); m = -\frac{2}{3}$
 $(4, 8); m = \frac{3}{4}$
 $(1, -3); m = 4$
 $(4, 1)(8, 2)$
 $(-9, 5)(-3, 3)$