

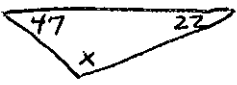
Name: _____

Week of: _____

8th SPIRAL REVIEW

Solve.

$$-9 + p = 12 \quad 0.7 + y = -1.34$$



$$7x = 35$$

Solve.

$$1.1x + 1.2x - 5.4 = -10$$

$$\frac{2}{3}h - \frac{1}{3}h + 11 = 8$$

$$6(5 - 8v) + 12 = -54$$

Solve.

$$-24 - \frac{1}{8}p = \frac{3}{8}p$$

$$12(2w - 3) = 6w$$

$$2(n - 3) = 4n + 1$$

Solve for y.

$$4.2x - 1.4y = 2.1$$

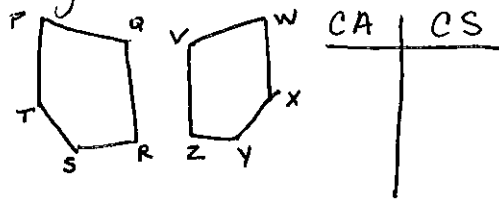
$$6y - 1.5x = 8$$

$$2x - y = 5$$

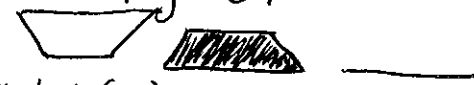
Tell whether the triangles are congruent.



Name the corresponding angles and sides.



Is the shaded figure a translation of the white figure?



Plot L(0,1), M(1,-2), N(-2,1)



Draw the figure, and reflect it over the x-axis. (on the back)

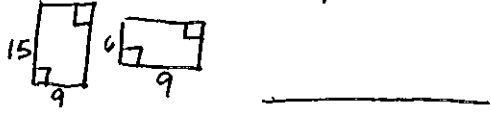
M(-2,1), N(0,3), P(2,2)

Draw the figure, and rotate it as described.

F(1,2), G(3,5), H(3,2)

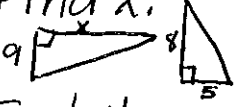
180° clockwise
(complete on the back)

Tell whether the two figures are similar. Explain.



The figures are similar.

Find x .



Find the ratio (small to big) of perimeters and area.

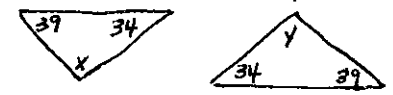


Translate 1 unit left, 6 up
Create a chart and graph the points and dilate.

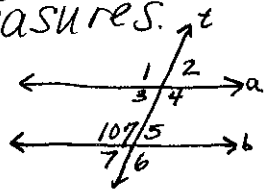
D(0,2) E(6,2) F(6,4); K=0.5



Tell whether the triangles are similar. Explain.



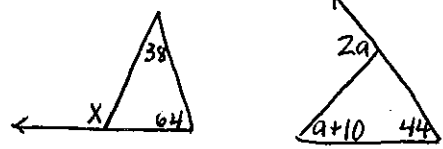
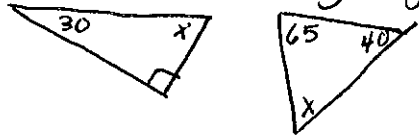
Find the missing measures.



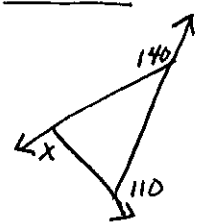
Identify the parallel lines.

Identify the transversals.

Find the missing angle.



Find the sum of the interior angles.



Find the measure of the exterior angles.

